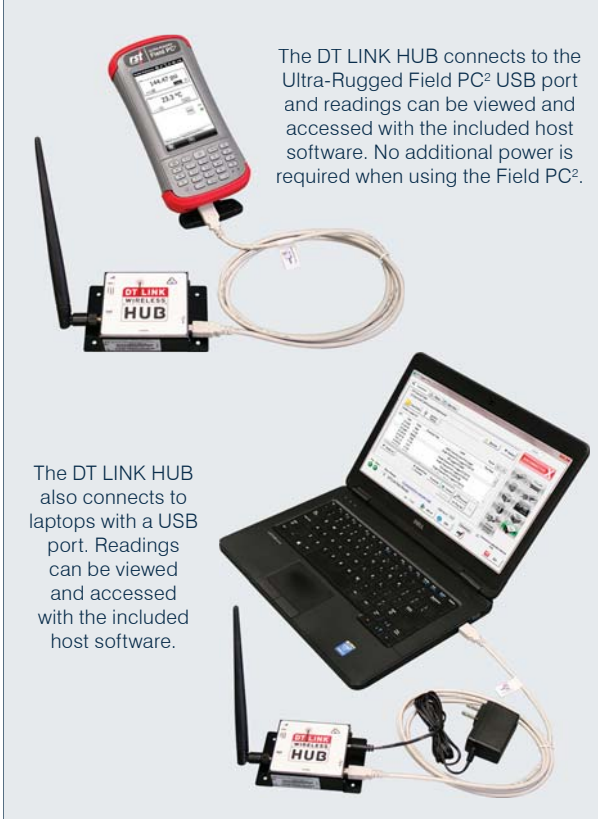




With a laptop connected to the DT LINK HUB wireless readings can be taken in seconds from DT LINK WIRELESS Data Loggers in hard to access areas - all from the convenience of your vehicle.

**VIEW IN ACTION:** <https://youtu.be/2VXDAGrmSU>



The DT LINK HUB connects to the Ultra-Rugged Field PC<sup>2</sup> USB port and readings can be viewed and accessed with the included host software. No additional power is required when using the Field PC<sup>2</sup>.

The DT LINK HUB also connects to laptops with a USB port. Readings can be viewed and accessed with the included host software.

	<b>PRODUCT CATEGORY:</b>
	READOUTS + DATA LOGGERS

# DT LINK WIRELESS



## > DT LINK IS:

A wireless connection to RST data loggers for quick data collection.

An alternative to USB wired connection. Low power, long-life battery.

Point-to-point and line of sight. Ships with DT Logger Host Software.

## > WHY DT LINK IS IMPORTANT

**DT LINK permits logger placements which have:**

Poor access, equipment required.	Trespass issues.
Access production disruption.	Rockfall hazard.
Fall protection requirement.	Other access hazards - animals, toxics, etc.

## > APPLICATIONS

Collect data from data loggers attached from the underside of a bridge's deck or high up on its pillars or beams.	Collect data in underground mines and also in open-pit mines.
Collect data over lakes, rivers and streams.	Collect data across ravines and valleys.

The data logger must be within line of sight and within specified antenna range. Please see reverse for specifications.

## > BENEFITS OF CHOOSING DT LINK

✓ <b>Increase Safety</b>	✓ <b>High Accuracy</b>
✓ <b>Increase Productivity</b>	✓ <b>Technical Support</b>
✓ <b>High Reliability</b>	

## > DT LINK SUPPORTED DEVICES\*

- DT2011B - Single Channel Vibrating Wire with Thermistor Data Logger
- DT2055B - 5/10 Channel Vibrating Wire/Thermistor Data Logger
- DT2040 - 20/40 Channel Vibrating Wire/Thermistor Data Logger
- DT2306 - Potentiometer Data Logger
- DT2350 - 2 Channel Load Cell Data Logger
- DT2485 - DT-BUS (Digital Bus) Data Logger
- DT4205 - 5/10 Channel 4-20mA Transmitter Data Logger/Thermistor Data Logger
- DTL201B and DTL202B - Uniaxial and Biaxial MEMS Digital Tilt Loggers

\*See separate product brochures at [www.rstinstruments.com](http://www.rstinstruments.com)



# DT LINK WIRELESS



PRODUCT CATEGORY:  
READOUTS + DATA LOGGERS

## SPECIFICATIONS + ORDERING

SPECIFICATIONS	
ITEM	DESCRIPTION
Wireless Type	900 MHz spread spectrum (Americas, Australia) 868 MHz (Europe) 2.4 GHz (other countries)
RF Power	24 dBm (900 MHz) 13 dBm (868 MHz) 10 dBm (2.4 GHz)
Typical range (line of sight with basic dipole antenna, ≈1 m off ground)	800 m (900 MHz) 500 m (868 MHz) 300 m (2.4 GHz)
Throughput	380,000 Bytes/minute
Battery Life, D size lithium cell	Years. Depends on channel count and reading rate.

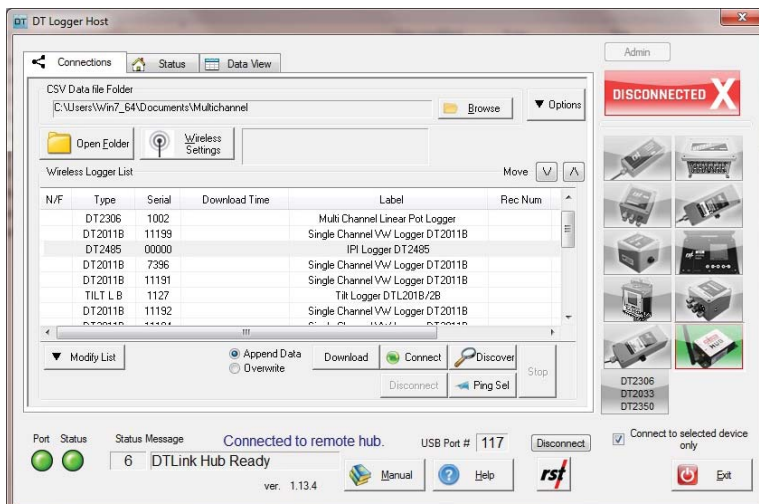
\* NOTE: Higher gain antennas are available. Contact RST with project specifics.

ORDERING	
ITEM	PART #
Single Channel Vibrating Wire with Thermistor Data Logger	DT2011B DTLINK
5/10 Channel Vibrating Wire/Thermistor Data Logger	DT2055B DTLINK
20/40 Channel Vibrating Wire/Thermistor Data Logger	DT2040 DTLINK
5/10 Channel 4-20mA Transmitter/Thermistor Data Logger	DT4205 DTLINK
Uniaxial MEMS Digital Tilt Logger	DTL201B DTLINK
Biaxial MEMS Digital Tilt Logger	DTL202B DTLINK
DT LINK HUB	DT LINK HUB



A close up shown of a DT Link Wireless enabled DT2011B Single Channel Vibrating Wire Data Logger.

DT LINK HUB POWER OPTIONS	
OPTION	DESCRIPTION
External Power Adapter	Included with DTLink Hub – for use when AC/mains power is available. Laptop required to connect to the DTLink Hub.
Vehicle Power Adapter	Included with DTLink Hub – for use when using hub from a vehicle. Laptop required to connect to the DTLink Hub.
Field PC	Sold separately – Field PC can both power and connect to the DTLink Hub. No laptop required.
Laptop	Most laptops can power the DTLink hub via USB but RST cannot guarantee that it will work in all cases. Please see manual for more details.



The DT Logger Host Software for PC provides an easy to use interface to view the collected data.